

Kenton C. Ward, CFM
Surveyor of Hamilton County
Phone (317) 776-8495
Fax (317) 776-9628

Suite 188
One Hamilton County Square
Noblesville, Indiana 46060-2230

Map Correction-Field Verification

Drain Number: #264

Drain Length: 1179

Drain Name: Cheswick: Cheswick Sec. 4 Arm Change +/-: -14'

Date: 3-7-2010


New Length: 1165

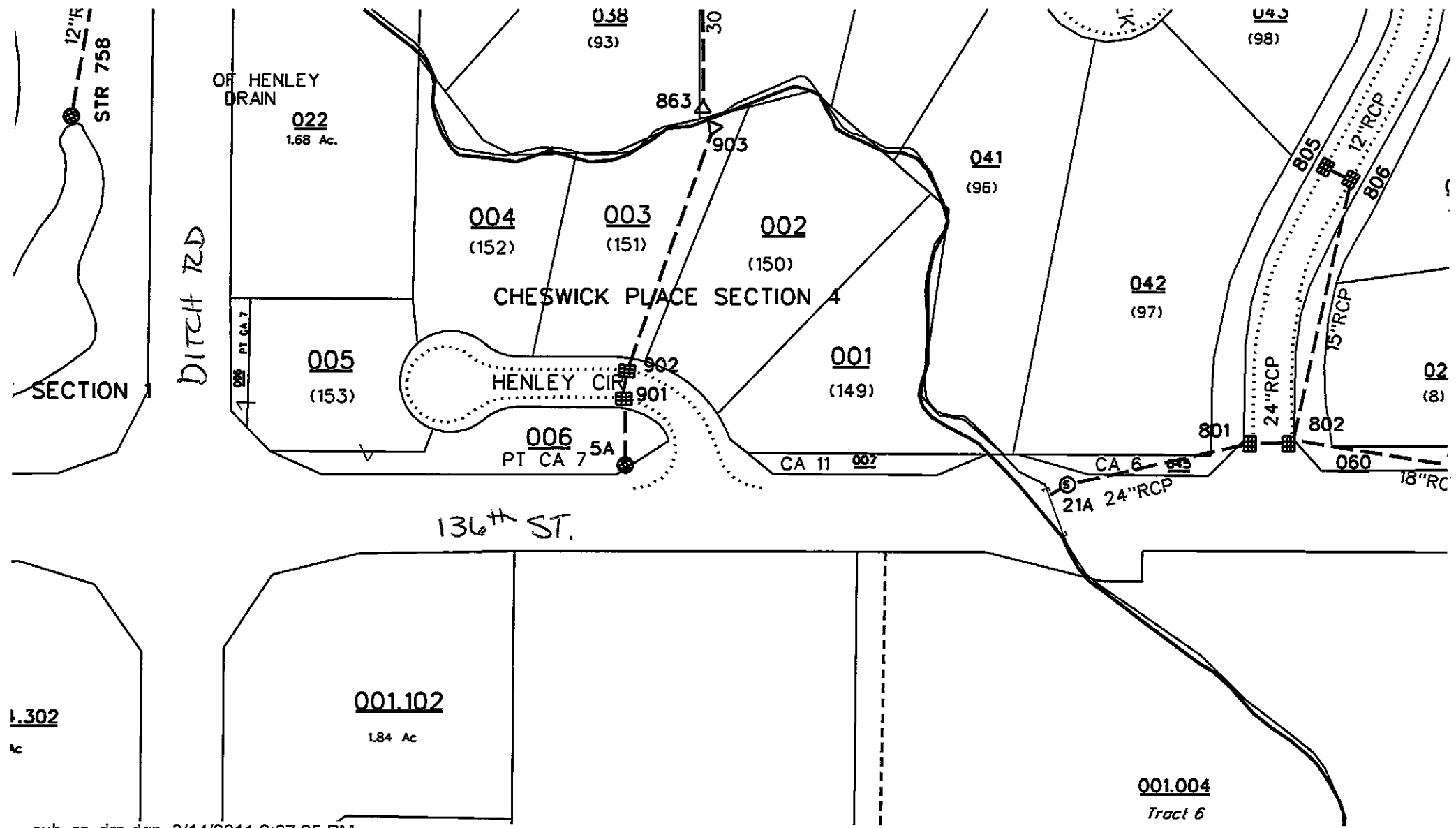
Verified By: SLM [LMC]

Notes & Sketch:

The City of Carmel widened 136th St. between Ditch and Springmill Rd. (See plans by DLZ with Project #04-07) (Sheet 6)

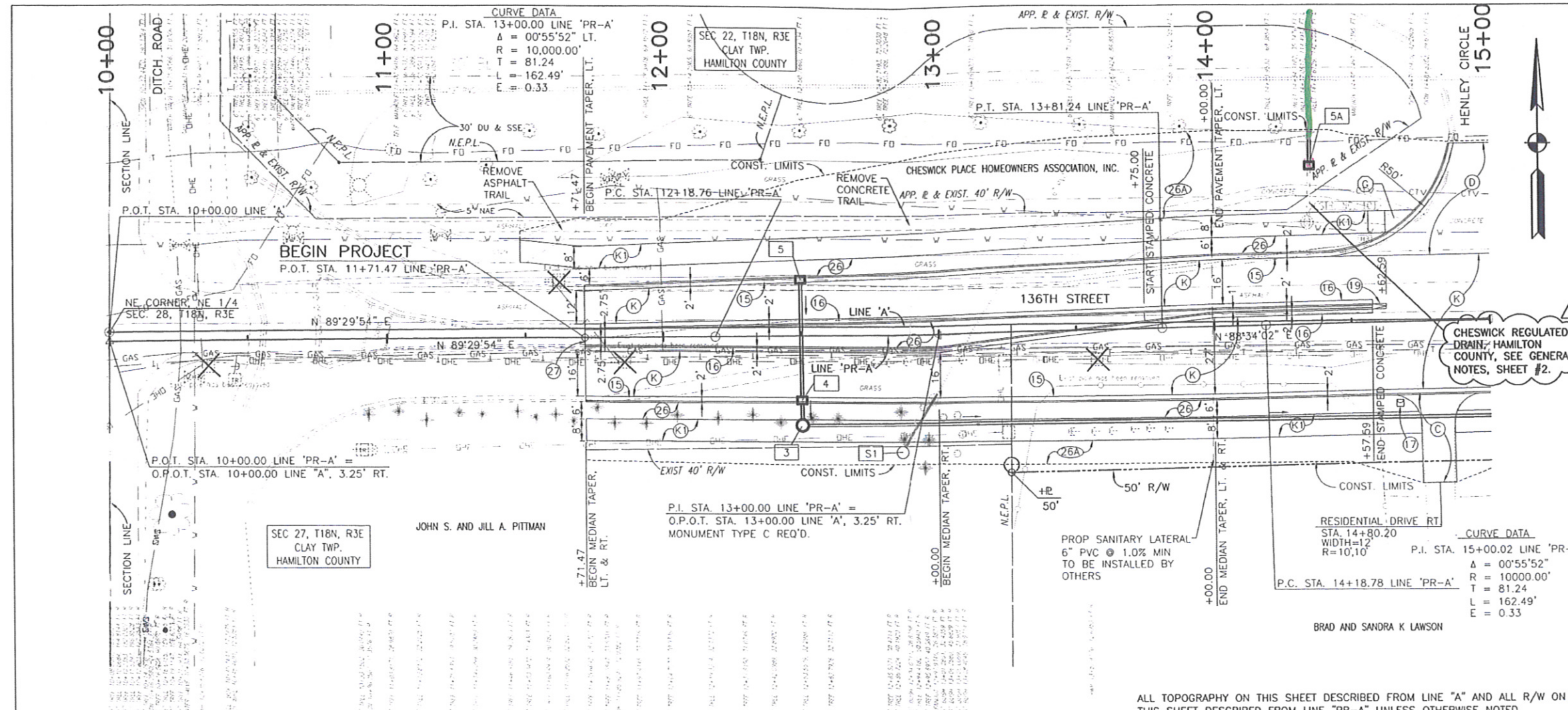
The project removed STR 900 and set new inlet #5A 14' upstream of the existing structure. Therefore, this change removed 14 feet of 12" RCP.


Suzanne L. Mills
GIS Specialist

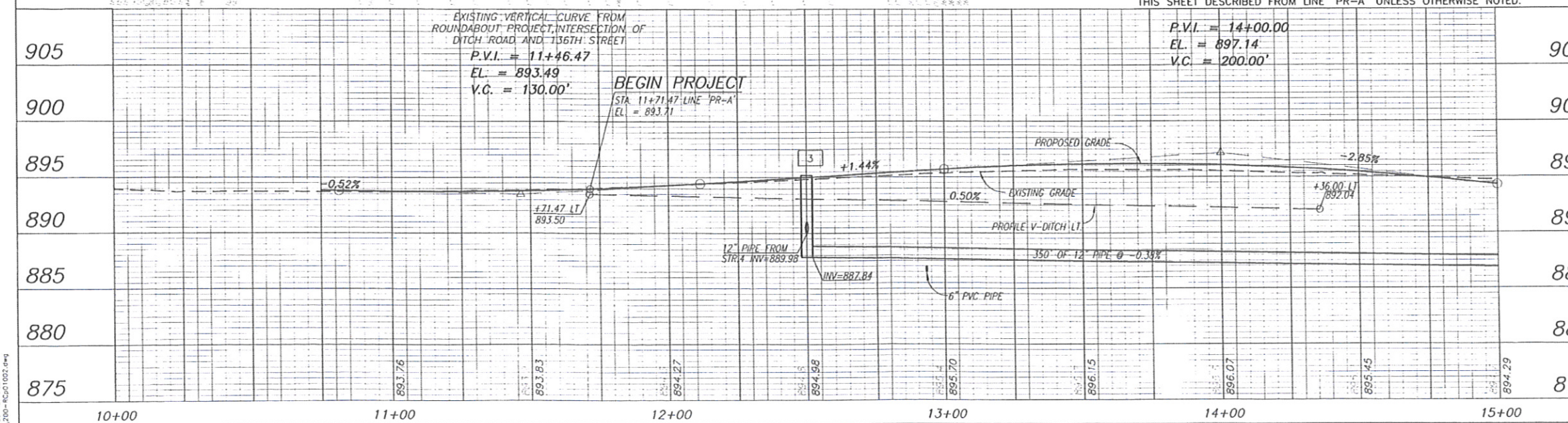


sub_rg_drn.dgn 3/14/2011 2:07:25 PM

See Plans By: DLZ Proj. 04-07, Sheet 6



- LEGEND**
- (15) COMBINED CONCRETE CURB AND GUTTER TYPE II
 - (16) COMBINED CONCRETE CURB AND GUTTER TYPE III
 - (17) MAILBOX ASSEMBLY
 - (19) CONCRETE CENTER CURB TYPE D
 - (26) SODDING, NURSERY
 - (26A) MULCHED SEEDING TYPE 'U' ON 4" TOPSOIL
 - (27) REMOVE 6" CONCRETE TAPER & SIGN (R4-7)
 - (C) CEMENT CONCRETE PAVEMENT FOR DRIVEWAYS, ON 6" COMPACTED AGGREGATE, SIZE NO. 53
 - (D) HMA FOR APPROACHES TO BE: 165#/SYD. HMA SURFACE, TYPE B ON 275#/SYD. HMA INTERMEDIATE, TYPE B ON 990#/SYD. HMA BASE, TYPE B
 - (K) MAINLINE PAVEMENT SECTION, SEE TYPICAL SECTION SHEET.
 - (K1) TRAIL PAVEMENT SECTION, SEE TYPICAL SECTION SHEET.
 - (-) CONCRETE CURB RAMP (LETTER INDICATES TYPE), COLORED CONCRETE



- 3 12+50, 31.87' RT. STR. NO. 3
MANHOLE TYPE C-4 & 350' OF 12" PIPE REQ'D
- 4 12+50, RT. STR. NO. 4
CATCH BASIN TYPE K-10 W/ CATCH BASIN HOOD & 9' OF 12" PIPE REQ'D
- 5 12+50, LT. STR. NO. 5
INLET J-10 & 43' OF 12" PIPE REQ'D
- S1 12+98, 26' RT STR. NO. S1
SAN CLEANOUT STR & 23' OF 6" PVC PIPE REQ'D
RELOCATE CLEANOUT TO 12+86, 45' RT. ADJUST TO GRADE. SEE SHEET #20.
- 5A 14+36, 52' LT STR. NO. 5A
INLET TYPE F-7
PROVIDE 8' OF 12" PIPE & CONNECT WITH EXISTING 12" PIPE

ALL TOPOGRAPHY ON THIS SHEET DESCRIBED FROM LINE "A" AND ALL R/W ON THIS SHEET DESCRIBED FROM LINE "PR-A" UNLESS OTHERWISE NOTED.

P.V.I. = 14+00.00
EL. = 897.14
V.C. = 200.00'

EXISTING VERTICAL CURVE FROM ROUNDABOUT PROJECT, INTERSECTION OF DITCH ROAD AND 136TH STREET
P.V.I. = 11+46.47
EL. = 893.49
V.C. = 130.00'

BEGIN PROJECT STA 11+71.47 LINE 'PR-A' EL = 893.71

EXISTING STRUCTURES
REMOVE INLET & 28' OF 12" RCP

FILED
JUL 14 2007
REC'D BY [Signature]

<p>PERMIT REVISIONS 7-10-07 JAR</p>		<p>RECOMMENDED FOR APPROVAL</p> <p><i>[Signature]</i> 7-10-07 DESIGN, ENGINEER DATE</p>	<p>CITY OF CARMEL 136th STREET</p>	<p>HORIZONTAL SCALE 1"=20'</p> <p>VERTICAL SCALE 1"=5'</p>	<p>ROAD FILE</p> <p>DESIGNATION</p>
<p>P.O.T. STA. 10+00.00 LINE 'A' STONE 1.0' DOWN</p>	<p>DESIGNED: FS DRAWN: JJC</p>	<p>CHECKED: JAR CHECKED: FS</p>	<p>PLAN AND PROFILE SHEET LINES 'A' AND 'PR-A' STA. 10+00 TO 15+00</p>	<p>SURVEY BOOK</p> <p>CONTRACT</p>	<p>SHEETS 6 of 76</p> <p>PROJECT 04-07</p>